



**SWAGAT  
GROUP**

**Swagat Infrastructure Ltd.**

ISO 9001: 2008, OHSAS 18001: 2007

ISO 14001: 2004 Certified Company

**Corporate Office :**

307-308, Sarthik Square, Nr. GNFC Info Tower, Adjacent to Pizza Hut, S.G. Highway,  
Bodakdev, Ahmedabad -380 054 (India).

Phone : +91 -79-2685 5968, +91 -98250 96815

Telefax : +91-79 -3017 6995

Email : [info@swagatinfrastructureltd.com](mailto:info@swagatinfrastructureltd.com), web : [www.swagatinfrastructureltd.com](http://www.swagatinfrastructureltd.com)

**Site Address :**

Swagat Blossom, Nr. Infocity & TCS IT Park, Sargasan Circle, S.G. Highway, Gandhinagar.

Phone : +91 98250 42836, +91 98250 42653, +91 90990 56270

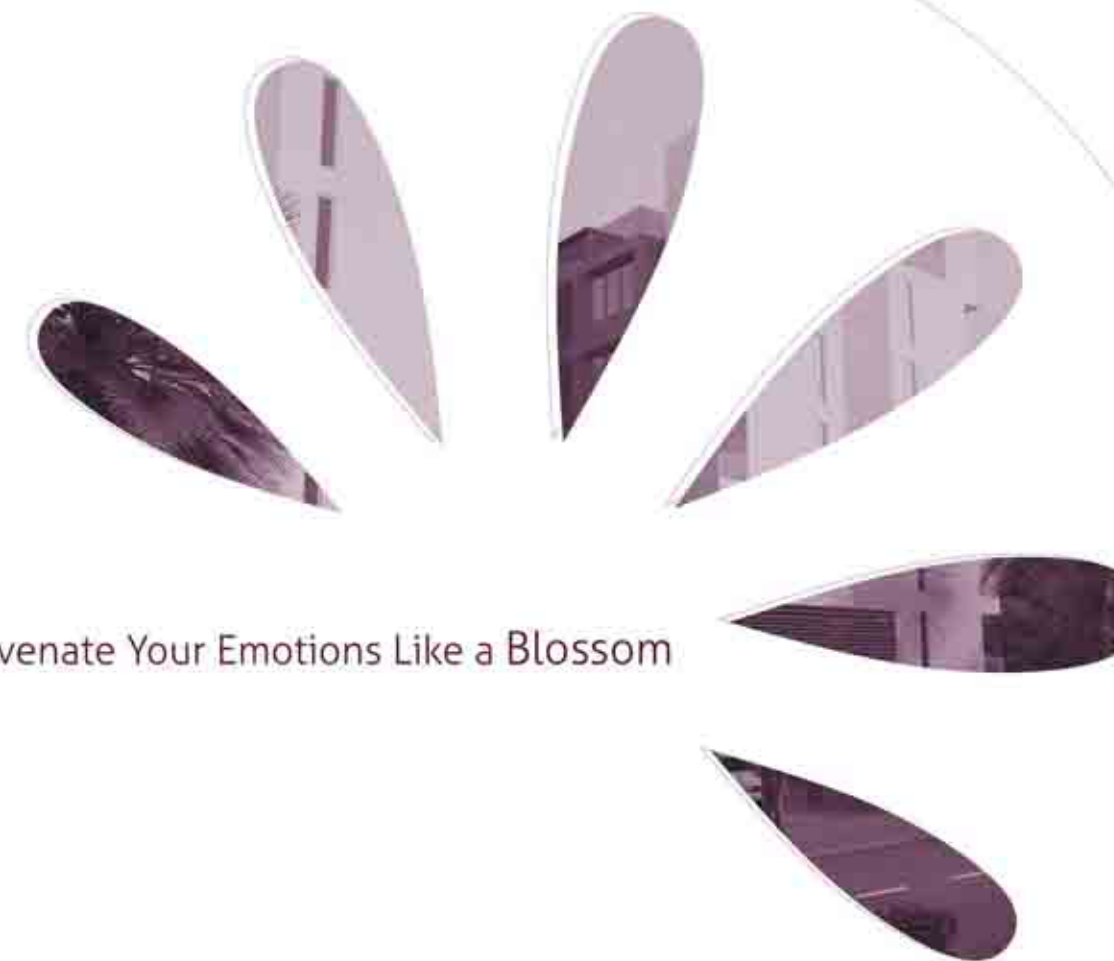
ARCHITECT



**hiren patel architects**

E - [admin@hirenpatelarchitects.com](mailto:admin@hirenpatelarchitects.com), [www.hirenpatelarchitects.com](http://www.hirenpatelarchitects.com)

AHMEDABAD, INDIA



Rejuvenate Your Emotions Like a Blossom

**swagat**  
**blossom**



SWAGAT  
GROUP



## About Swagat...

Swagat Group is committed to bring different facets of quality living and lifestyle through its unique projects. With its humble roots for around 4 decades, Swagat Group has emerged today a real estate developer company that builds projects that surpasses the standard of excellence.

The Group initiates developments of new areas with new ideas that have never been explored before. This is the domain of Swagat Group. The group has explored Vejalpur, Ambli, Thaltej, Motera, Chandkheda, Shilaj, and Adalaj by putting many prestigious schemes. In Gandhinagar, Swagat Group has successfully completed 7 projects. Swagat Group is bridging the gap of metro city and capital city to a mega city. Currently, 4 projects are running in Gandhinagar in which **Swagat Blossom** is one of them.

You must have seen many houses so far. We invite you to be part of **Swagat Blossom** one more housing scheme to your list. Once you enter Swagat, your heart will start pounding hard and your intuition will echoed out to say that, 'yes, this is the place where we want to live rest of our life.'

From having a passionate and loving partner, to possessing a home where you would like to share your emotion. If this is true then

'SWAGAT ME AAPKA SWAGAT HAI.'

swagat  
blossom

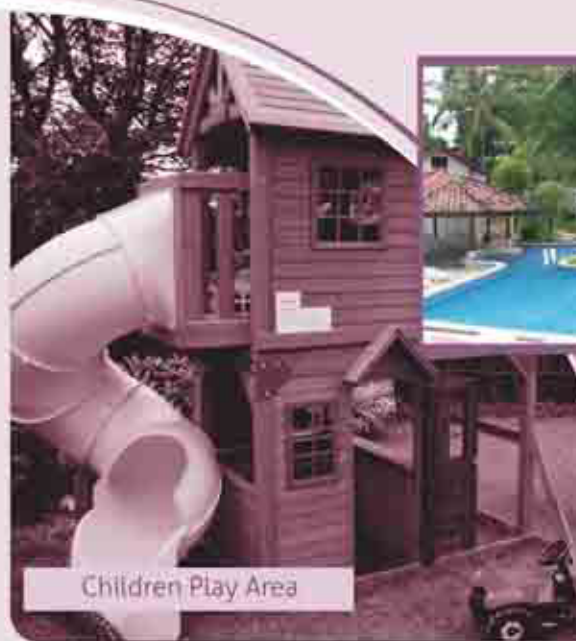








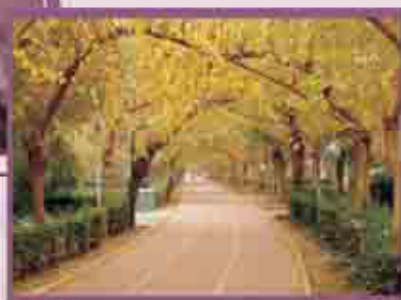
Security System with CCTV



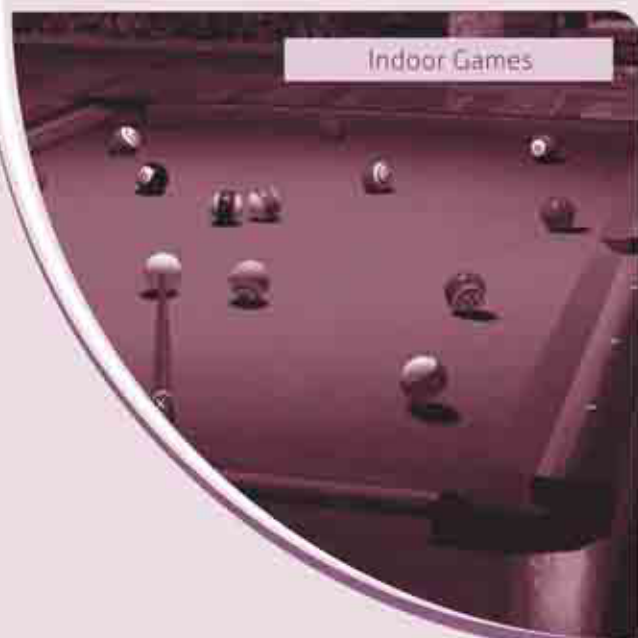
Children Play Area



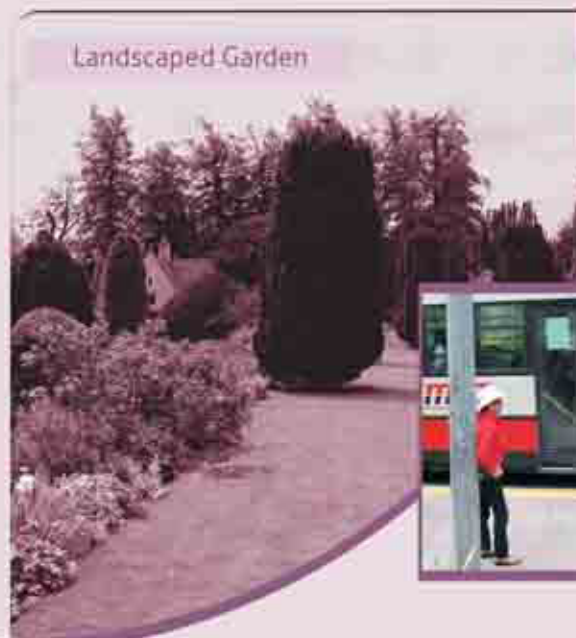
Swimming Pool



Jogging Track



Indoor Games



Landscaped Garden



Drop Up Zone

## Amenities..

Swagat Blossom comes with features that reflect intuitively designed amenities and the one that has been inspired by the building's unique character. The Following are the amenities which surrounds you at Swagat Blossom



Yoga



Sit Out Area



Temple



Open Air Theater



Kids Pool with Water Slide



Fitness Center



Day Care Center



## Current Projects...



Swagat Afford



Swagat Flamingo



Swagat Echo

The Group Has More Than 6000 Valued Customers.  
Swagat Group Has Successfully Completed, Construction Area Of Around 60 Lakhs Sq. Feet



"Best Developer" Award, 2010  
in the Residential category by  
Construction source India, Mumbai



"Best Bungalow"  
Runner up Award, 2011  
GIHED, Ahmedabad



"Over All Excellence- Market Trust"  
Award 2011, Presented by  
Magicbricks.com (Times Group)



"Quality Excellence Award" 2011,  
Presented By Indian Achievers  
Forum, Delhi



Indian Leadership Award  
For Infrastructure Development,  
2010 by IEDRA, Delhi

swagat  
blossom



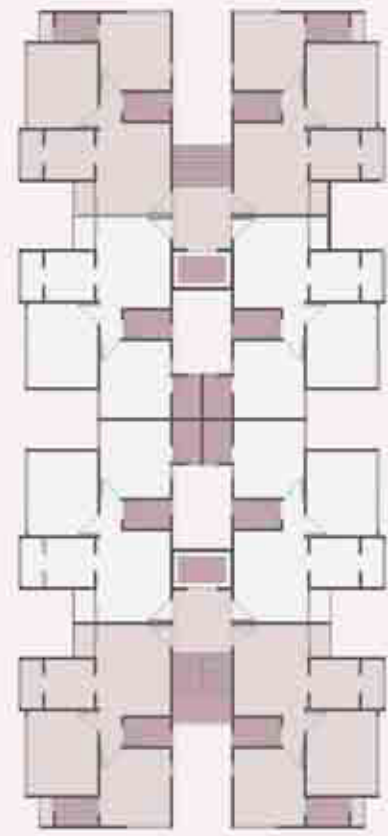


Luxury with Happiness...



## Type B

Bed Room 11'0" X 10'0"  
Other Rooms Dimensions Will Remain Same as Per Type A



Type A-B



## Type A

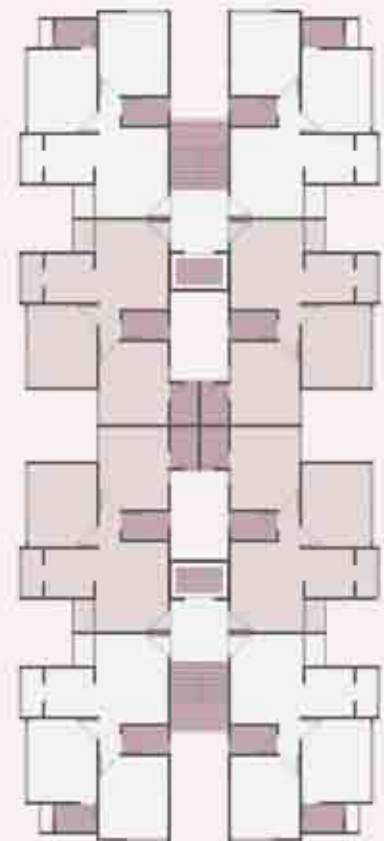


Type A-B

Block No : 1, 2, 3, 4, 5, 6

### Type B1

M. Bed Room 11'0" X 10'0"  
Other Rooms Dimensions Will Remain Same as Per Type A1



Type A1-B1



Type A1-B1

Block No : 1, 2, 3, 4, 5, 6





Luxurious Living in Elegant Surroundings...

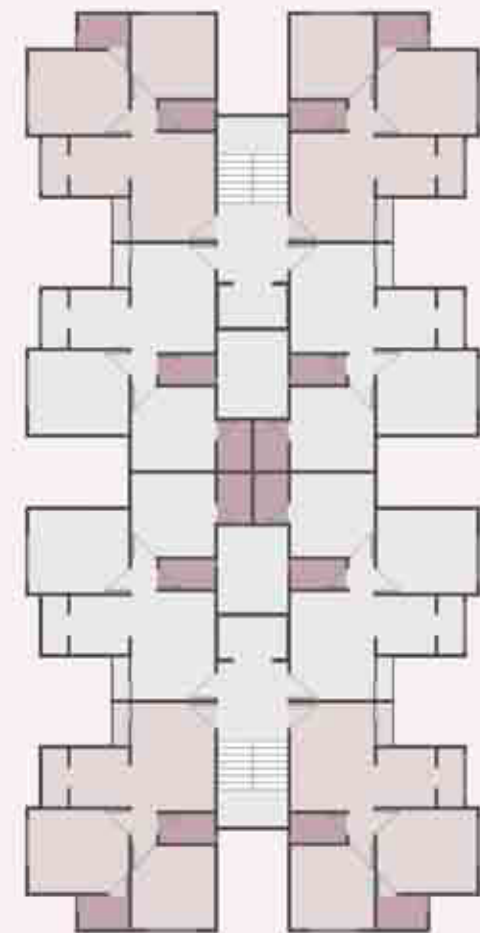


### Type D

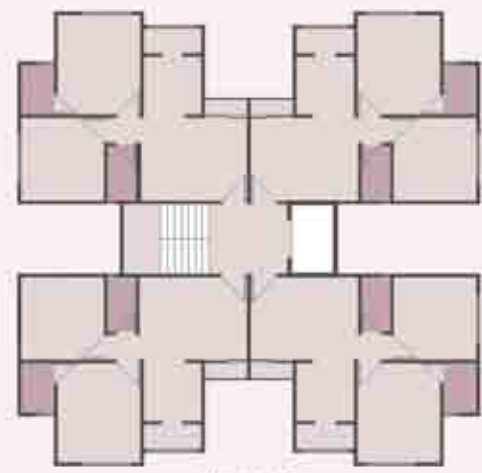
M. Bedroom 11'0" X 10'0"  
Other Rooms Dimensions Will Remain Same as Per Type C

### Type E

M. Bedroom 10'0" X 10'0"  
Other Rooms Dimensions Will Remain Same as Per Type C



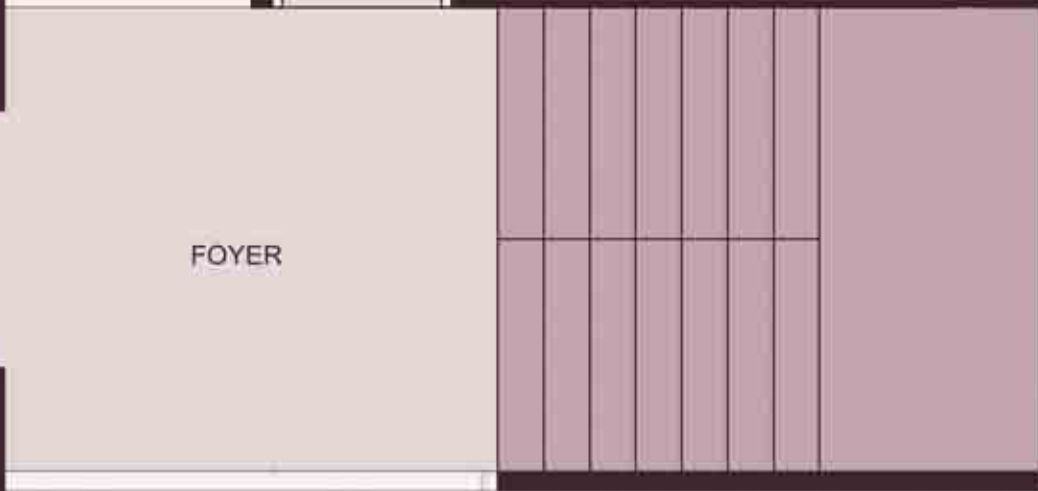
Type C-D-E



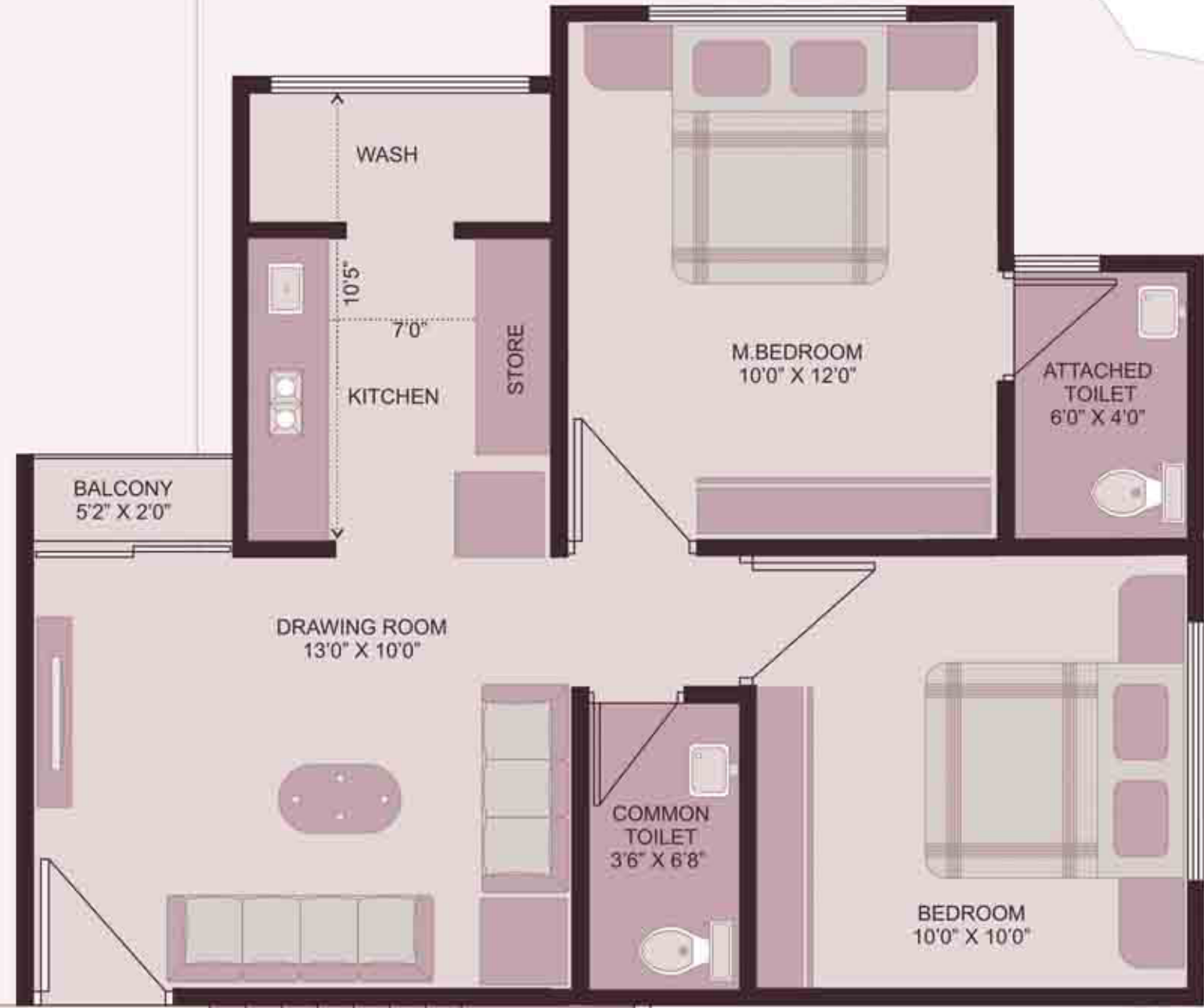
Type C



LIFT



FOYER



### Type C



### Type C

Block No : 24, 29, 30, 31, 32, 33



### Type D

Block No : 7, 8, 9, 25, 26, 27, 28



### Type E

Block No : 16, 17, 18, 19, 20, 21, 22, 23

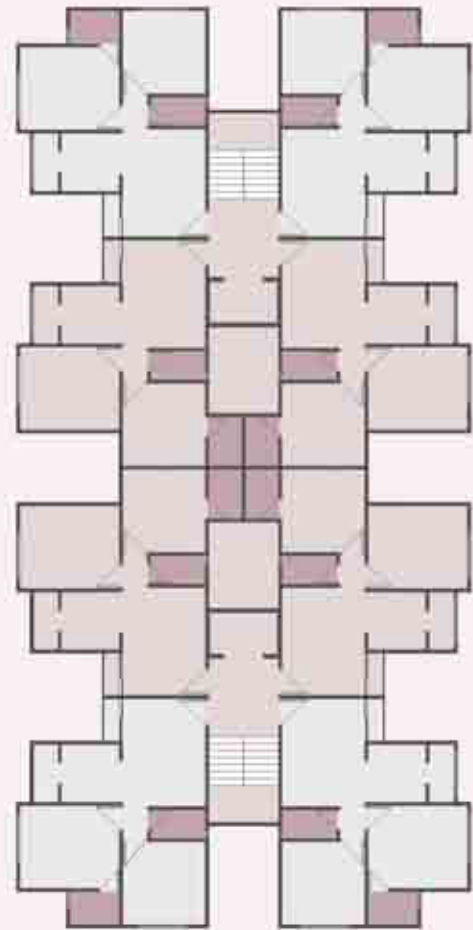


### Type D1

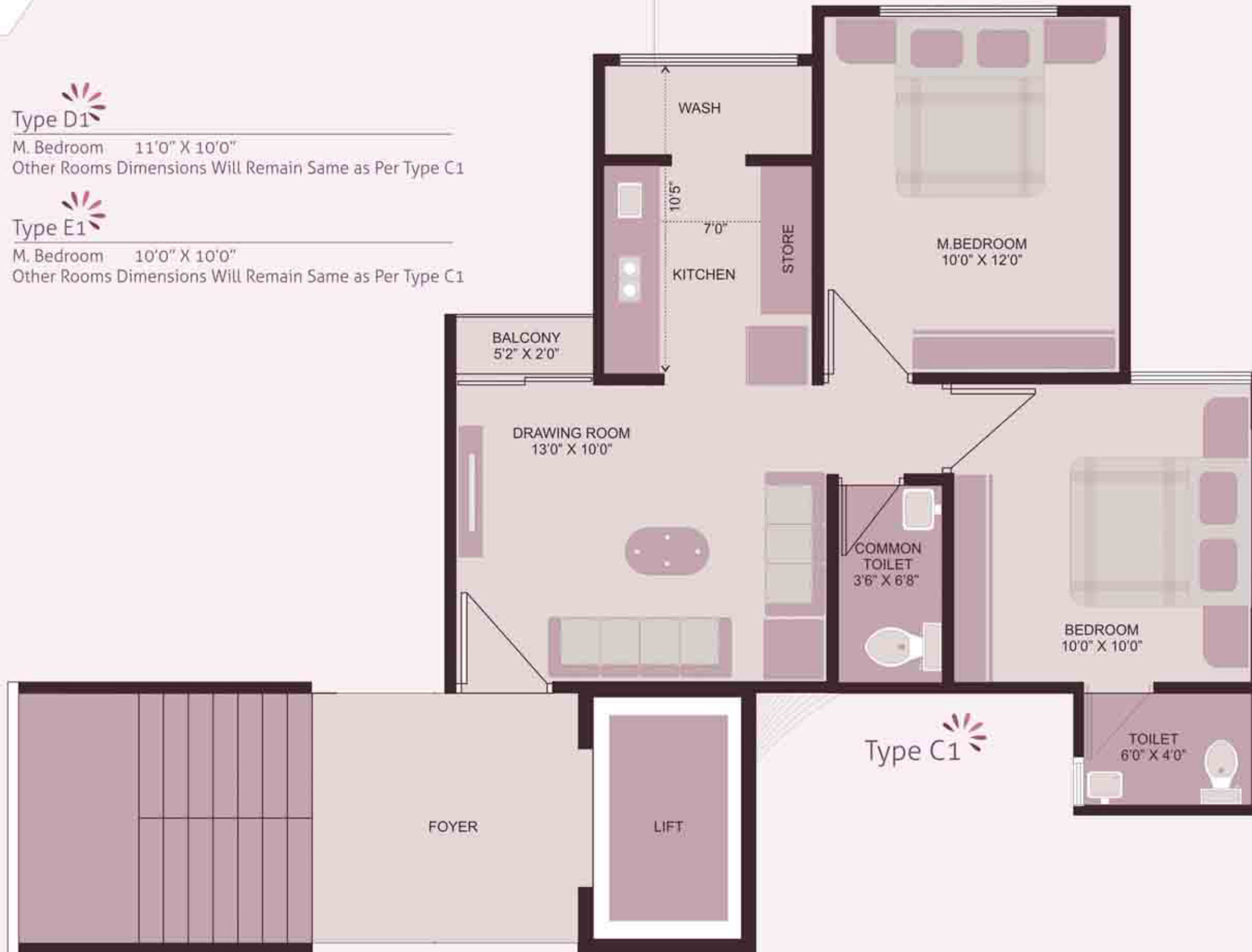
M. Bedroom 11'0" X 10'0"  
Other Rooms Dimensions Will Remain Same as Per Type C1

### Type E1

M. Bedroom 10'0" X 10'0"  
Other Rooms Dimensions Will Remain Same as Per Type C1



Type C1-D1-E1



### Type C1

Block No : 32, 33



### Type D1

Block No : 7, 8, 9, 25, 26, 27, 28



### Type E1

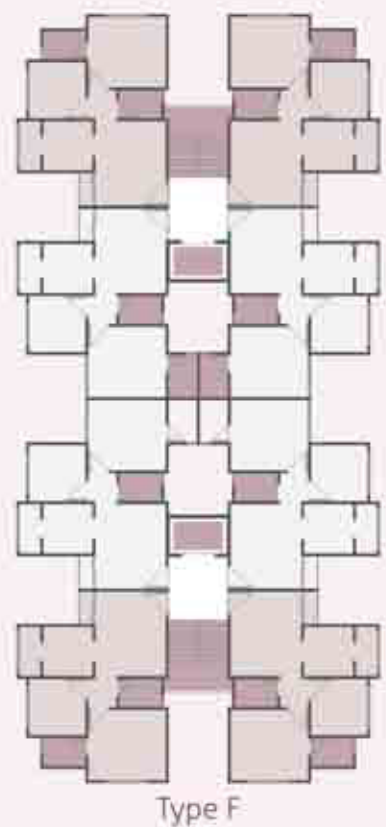
Block No : 16, 17, 18, 19, 20, 21, 22, 23





Experience the Difference Between a House and a Home...

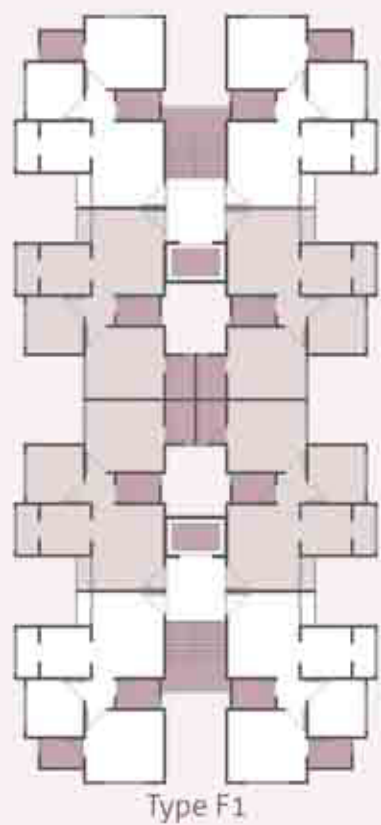





Type F

Type F  
Block No : 10, 11, 12, 13, 14, 15





 **Type F1**  
Block No : 10, 11, 12, 13, 14, 15





Luxurious Living with Affordability 



## Specifications

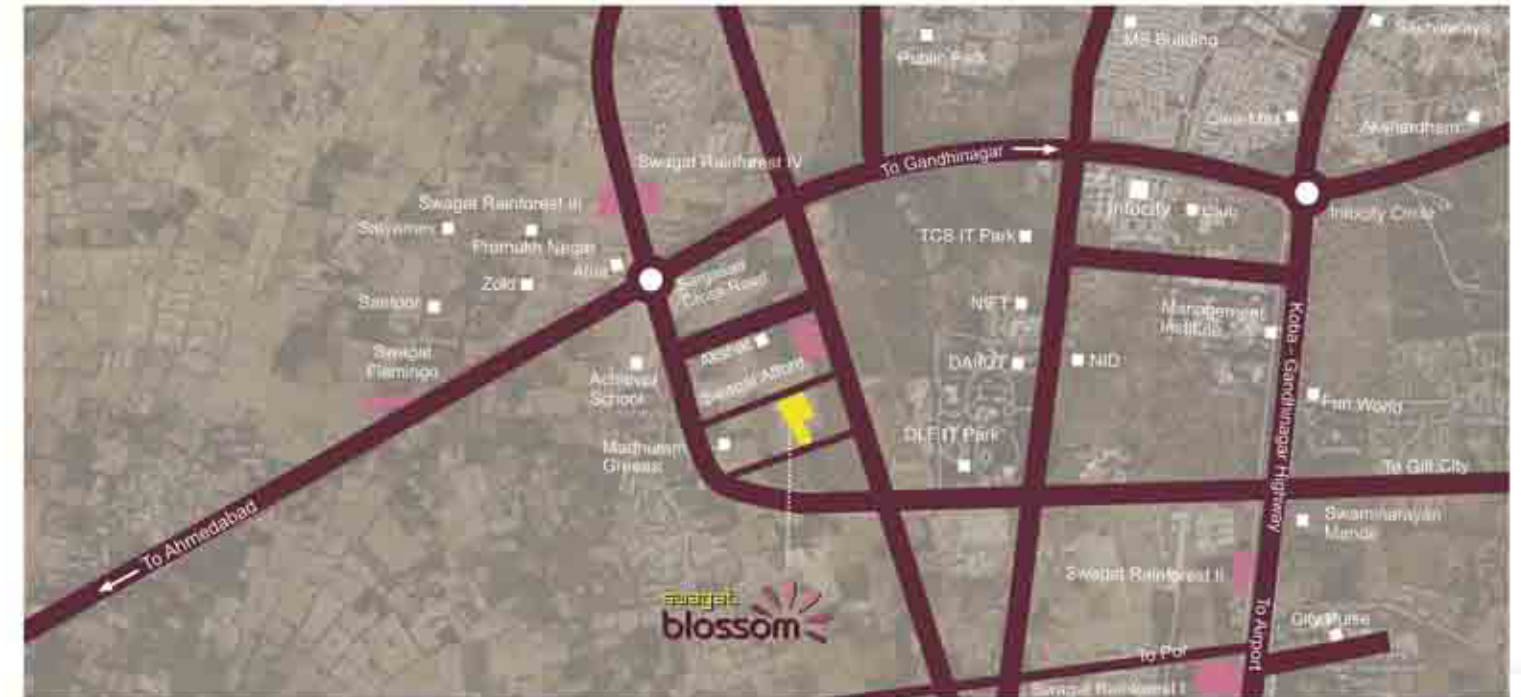
Tiles	  
Bath Fittings	  
Bath Accessories	 
Elevators	 
Glass & Aluminum	  
Pipe Fittings	  
Paints	  
Electrical Accessories	 
Doors	Wooden Flush Doors

\*Above Brands or Equivalent

### Note :-

- Any member is liable to lose membership if he/ she fails to pay the regular installments as per terms, and no arguments will be entertained thereafter.
- Maintenance Charge, Electricity Connection, GUDA, Stamp and Registration, Legal charges and other Govt. Levies if any shall be borne by member.
- This brochure is only for advertisement and it shall not be treated as part of legal document.
- If any Members fail to pay according to terms then rate will be revised without prior notice.
- In the event of cancellation for any reason, 3 % of the basic amount will be deducted and balance amount will be refunded after the booking of same unit(s).
- All rights reserved by the developers, to make any changes in plan, elevation & other details were in to comply with statutory regulation & shall be binding to all the members.
- No alteration in exterior elevation & outside colour scheme shall be allowed. Purchaser shall not disturb, construct or claim or do any kind of activity in common area, passage, amenities, terrace, or do any kind of construction work.

## Key Plan



A residential project, set to galvanize the new growth pattern in the city of Gandhinagar, welcomes you all and looks forward to complete the journey together. Come closer to create your world and live the dream together with your new surroundings and a larger family.

Welcome aboard!



Wide Road

Wide Road

Wide Road

Wide Road

Wide Road

GARDEN

GARDEN

TYPE-A	TYPE-C	TYPE-E
TYPE-A1	TYPE-C1	TYPE-E1
TYPE-B	TYPE-D	TYPE-F
TYPE-B1	TYPE-D1	TYPE-F1

Layout Plan

ENTRY